

KENNESAW STATE UNIVERSITY | COLLEGE OF THE ARTS



Department of

# THEATRE and

2024-2025 SEASON



KENNESAW STATE  
UNIVERSITY  
COLLEGE





# THEATRE

**T**he award-winning Department of Theatre and Performance Studies (TPS) offers a Bachelor of Arts with four concentrations: Acting, Design and Technology, Musical Theatre, and Performance Studies. The four areas of study are accredited by the National Association of Schools of Theatre. Our innovative and diverse season includes plays, musicals, poetry performances, adaptations of classic literature, storytelling, improv comedy, and new works.

Throughout the year, TPS invites acclaimed theatre professionals to intersect with our students for masterclasses and conversations about theatre and what it means to be



Performances are staged in two elegant venues on the Kennesaw campus: the Stillwell Theater, our 315-seat proscenium house, and the Onyx Theater, our intimate black box space. The KSU Tellers, our unique storytelling ensemble, and K.I.S.S., our improv troupe, perform at local schools, professional venues, and national conferences and competitions.

Our location in the Atlanta metropolitan area offers students frequent opportunities for internships, jobs, and networking connections with professional theatre artists who work in Atlanta's dynamic theatre scene. Education abroad experiences include programs in London, Paris, and Montepulciano, Italy.

: Dates and times are subject to change.  
Visit [kennesaw.edu/arts/concerts-events/](http://kennesaw.edu/arts/concerts-events/) to confirm your event details.

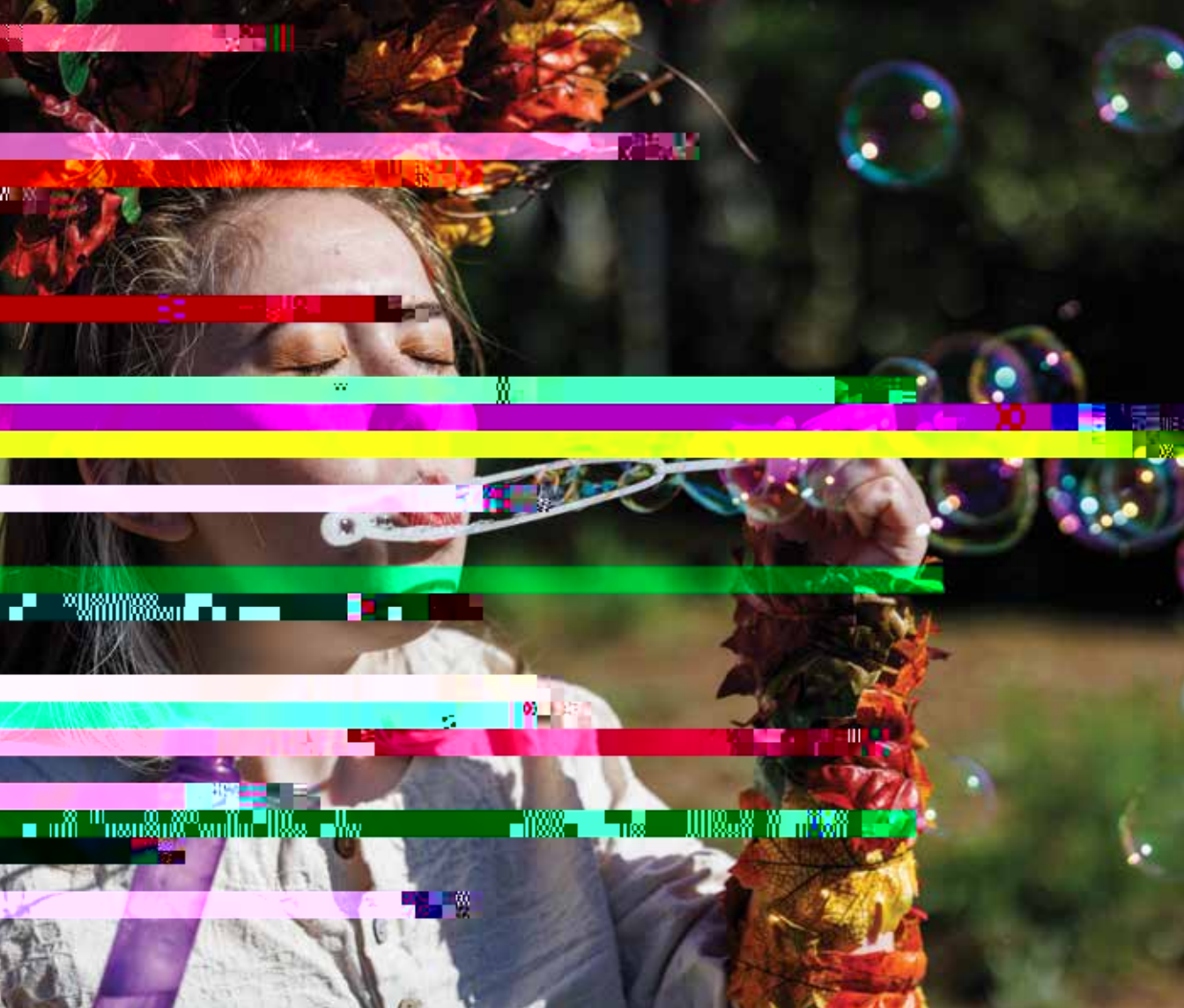




*Barbecue* centers on around the O'Mallerys, a



*Pippin* is the story of one young man's journey to be extraordinary. Heir to the Frankish throne, the young prince Pippin is in search of the secret to true happiness and fulfillment. Pippin finds that happiness



**FEB.  
13-23**

STILLWELL THEATER



# Shakespeare's

**Written by William Shakespeare**  
**Directed by Marlon Burnley**

Scottish general Macbeth receives a prophecy from a coven of witches that one day he will become King of Scotland. Consumed by ambition and spurred to action by his wife, Macbeth murders King Duncan and takes the Scottish throne for himself. He is then wracked with guilt and paranoia. Forced to commit more and more murders to protect himself from enmity and suspicion, he soon becomes a tyrannical ruler. The bloodbath and consequent civil war swiftly take Macbeth and Lady Macbeth into the realms of madness and death.





A post.016 Tm(AC)-12 (T)J0.137-0y.98ilD jmk38536 h4,Tm(A)1w (fcs h0ws B)

**APRIL  
11-13**

---

---

**MORGAN  
CONCERT HALL,  
BAILEY  
PERFORMANCE  
CENTER**

Mature Language  
and Content Advisory

# **Sondheim on**

**Music & Lyrics by Stephen Sondheim**  
**Conceived by James Lapine**  
**Directed by Amanda Wansa Morgan**  
**Conducted by Nathaniel Parker**



## **A partnered production with Bailey School of Music**

*Sondheim on Sondheim* is a multimedia revue of Sondheim's work incorporating "original and archival commentary" from Sondheim, taking audience members to the very heart of his life and work. In this very special collaboration with the Dr. Bobbie Bailey School of Music, the KSU Symphony Orchestra and KSU Opera Theater will perform onstage in a concert-style setting.

Tickets: 470-578-6650 | [kennesaw.edu/arts/academics/theatre](https://kennesaw.edu/arts/academics/theatre)

# Student

**FALL**  
**2024**

## **The 48 Hour Play Festival**

**Coordinated by Margaret Baldwin Pendergrass**

Come see the final product of 48 hours of art-making from inception to final product!

## **Coming Out! A Celebration of LGBTQ Culture and Identity**

**Coordinated by Tom Fish | Directed by KSU Students**

Celebrating its twelfth year, this inspiring, celebratory, and thought-provoking performance features coming-out stories, musical acts, and more from KSU and metro-area communities, performed by KSU students.

## **KSU Tellers Fall Showcase**

**Directed by Charles Parrott**

The KSU Tellers invite you to join them as they present their best solo performances from the fall semester. This event may not be suitable for audiences under the age of 16.

## **K.I.S.S. Fall Improv Showcase**

**Created by KSU Students**

Our resident improv ensemble offers an evening of performances on the fly. Side-splitting, surprising, and at times, absolutely silly.



# Student

**SPRING**  
**2025**

## **The KSU Colors Showcase**

**Original works created by KSU students**

Learn more about KSU Colors on

Instagram: @ksu\_colors

## **KSU Tellers Spring Showcase**

**Directed by Charles Parrott**

The KSU Tellers invite you to join them as they present their best solo performances from the spring semester. This event may not be suitable for audiences under the age of 16. Learn more about the KSU Tellers on Instagram: @ksu\_tellers

## **K.I.S.S. Spring Improv Showcase**

**Created by KSU Students**

Our resident improv ensemble offers an evening of performances on the fly. Side-splitting, surprising, and at times, absolutely silly. Learn more about K.I.S.S. on Instagram: @ksu\_kisstagram

## **Student Company for Musical Theatre (SCMT) Showcase**

Enjoy an evening of song and dance that is directed and performed by KSU students. Learn more about SCMT on Instagram: @studentcompany.mt





**OCT.  
23**

---

## **Fall Undergraduate Research Workshop**

Onyx Theater

Through this workshop undergraduate students will share their works in progress through presentations and open Q&A discussion.

**NOV.  
07**

---

## **6th Annual Faculty Research in the Arts Colloquium**

ZMA Atrium

Join our faculty in our 6th Annual Faculty Research in the Arts Colloquium.

**NOV.  
20-22**

---

## **Fall 2024 COTA Council for Undergraduate Research Symposium of Student Scholars**

Marietta campus

Come join our College of the Arts students as they present at the Fall Symposium of Student Scholars, which showcases research.









**\$25 per person (\$50 per couple) covers the entire season!**

#### **WHY JOIN?**

- 20% off one ticket to all performances\*
- Free and unlimited ticket exchanges
- Invitation(s) to the Season Preview Event
- Concierge Service: one-on-one assistance with planning your season, identifying events tailored to your interests, and an easy check-out process with one of our Box Office employees
- 20% discount on previously excluded concerts: Holiday Concert and Collage Concert
- **New:** Priority seating for all general admission events\*\*

#### **HOW TO JOIN:**

Call 470-578-6650, scan the QR code on this page, or visit us online: [kennesaw.edu/arts/concerts-events/box-office.php](http://kennesaw.edu/arts/concerts-events/box-office.php).

